

# ScooterPrints.com - Scooter Decal Installation Instructions pg. 1

**1. Read** these instructions all the way through.

**2. Make sure** the temperature is between 60 - 85° F. If it's too cold, the adhesive won't stick. If it's too hot, the adhesive gets too sticky and makes it hard to put the decals in the right place. Decals cannot be moved once they are applied.

**3. Gather** everything you'll need:

- The decal set and the squeegee that came with it
- A clean sprayer bottle - pour in a few drops of dish soap like Palmolive, then add water and shake
- Rubbing alcohol or cleaner
- Soft cloth - a clean, lint-free dusting cloth works well
- Scissors
- Tape - painter's tape is best, but masking tape works too



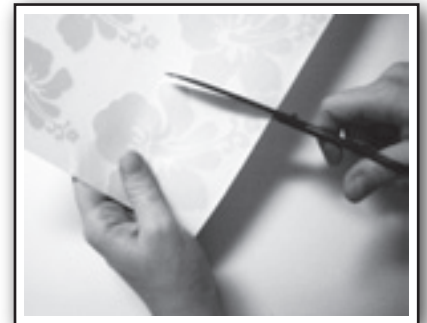
**4. Cut** out each decal, cutting in straight lines wherever possible.



NOTE: Don't cut pieces that should stay next to each other, like pieces of the shooting stars in our Star set.



Keep the decals in separate piles on a clean, flat surface so they don't stick together or get dirty. Each set has a left half and a right half, so you can make both sides of your scooter look the same if you want to.



**5. Clean** the scooter. Rubbing alcohol works best because it dries rapidly, but it may not be good for some types of plastic or paint. Check your scooter manual, or ask your dealer what cleaner to use.

Using the cleaner and the soft cloth, thoroughly clean all areas of the scooter where you plan to apply decals. Small bits of dust or grit will show up as little bubbles under your decals, so clean thoroughly. Afterward, wash your hands to remove oils, so when you handle the decals you won't reduce their stickiness.

**6. Place** the decals. Now it's time to decide where you want the decals.

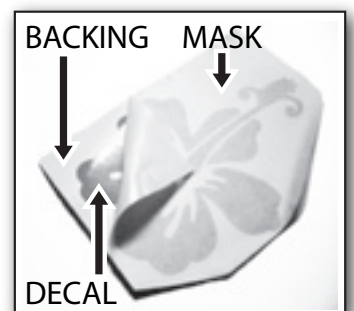
There are 3 layers of each decal: backing (waxy paper), the decal in the middle, and mask (tape) on top of the decal.

Keeping all 3 layers together, tape a decal into the position where you think you want it to be on your scooter. The mask should face you, and the backing should be against the scooter. Tape the decal securely along the top edge.

NOTE: Start with the largest pieces first. They usually fit best under the seat. Then go to the next-largest pieces. If you're covering the whole scooter, your best bet is to keep using the largest piece you have left, and put it far away from the other large pieces. That way, you can fill in the gaps with the smaller pieces.

Move the decals around until you like the look.

NOTE: It's a good idea to keep a few decals in reserve to replace any mistakes you make.



# ScooterPrints.com - Scooter Decal Installation Instructions pg. 2

## 7. Apply the decals.

- 1) Pick a small decal. They are easiest and will help you get the hang of it.
- 2) Remove the decals around the decal you have chosen to work with. You don't want to get any of the other decals wet, only the one you're working with.
- 3) Using the painter's tape like a door hinge, flip the decal up and crease the tape.
- 4) Spray the area under the decal - where you're going to stick it to the surface - with your spray bottle of soapy water. For glossy sets, use plenty of water. For reflective, you'll need a lighter mist. If you spray too much water, the decal won't stick.
- 5) Remove the backing to expose the adhesive. Don't touch the decal, just the mask.
- 6) Grip the loose corners of the mask and gently pull them down. Press the mask down onto the scooter surface, laying the decal flat on the scooter. Do not press on the decal itself - only the mask - and do not smooth the edges of the mask. Just stick the corners down.
- 7) Now, using your squeegee, start from the middle of the decal and work your way outward using firm pressure, like you are using a rolling pin on a pie crust. Squeegee up and down to force the water out from under the decal. Don't squeegee directly onto the scooter, because it might scratch the surface.
- 8) Spray soapy water onto the mask. This makes it easier to remove.
- 9) Starting from one corner, slowly remove the tape and mask. Don't squeegee the decal after the mask is removed because it could scratch the decal. If it's loose, press it back down with your fingers.
- 10) If you ended up with bubbles or wrinkles, remove the decal and look at the Troubleshooting section below.
- 11) Dry off the scooter and the decal. Put the next decal back into place using painter's tape all along the top.
- 12) Continue applying decals one at a time. The key is to take your time, use enough water, and press hard with the squeegee from the middle out.

Step 3 & 4



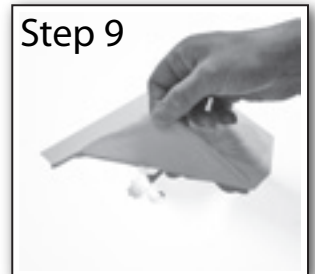
Step 5



Step 6



Step 9



## Troubleshooting:

Tiny bubbles are usually specks of dirt that got trapped under the decal. Clean the scooter off again.

Other bubbles: you didn't squeegee hard enough, or you did not start from the middle and work your way outward. You may be able to poke them with a sharp knife and release the air.

Wrinkles: you didn't pull hard enough during step 6. Pull the mask hard enough to keep the decal flat as you bring it down onto the scooter.

Tape won't come off without the also removing the decal: you are using too much water, or it is too cold.

Don't worry, our sets come with enough decals that you can lose a few while you're practicing.